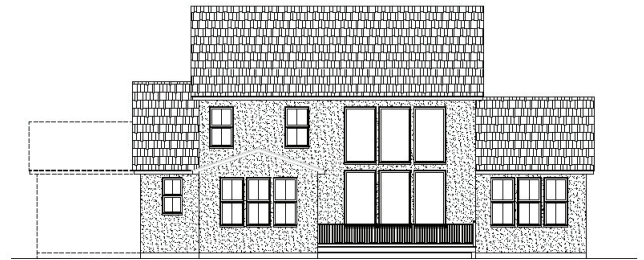
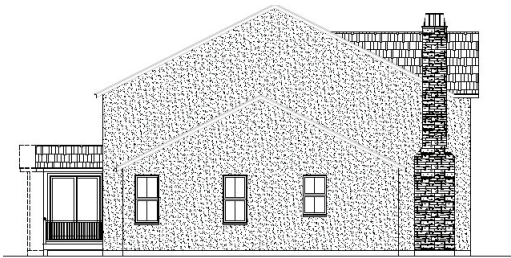




FRONT ELEVATION



REAR ELEVATION



LEFT ELEVATION



RIGHT ELEVATION

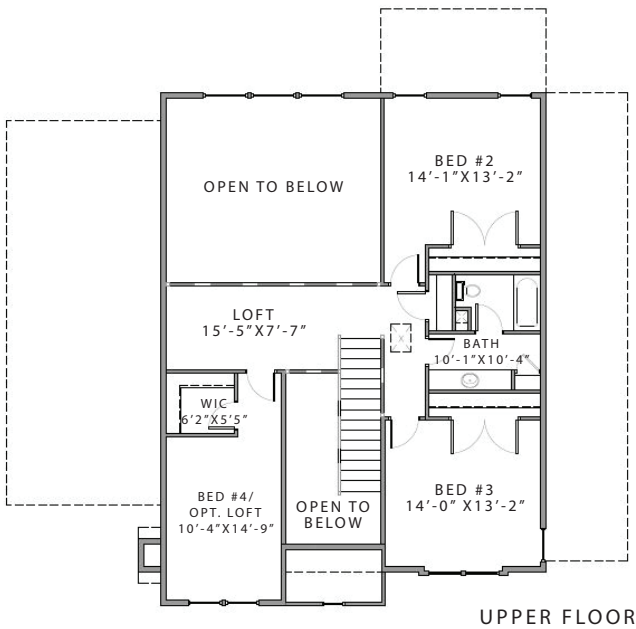
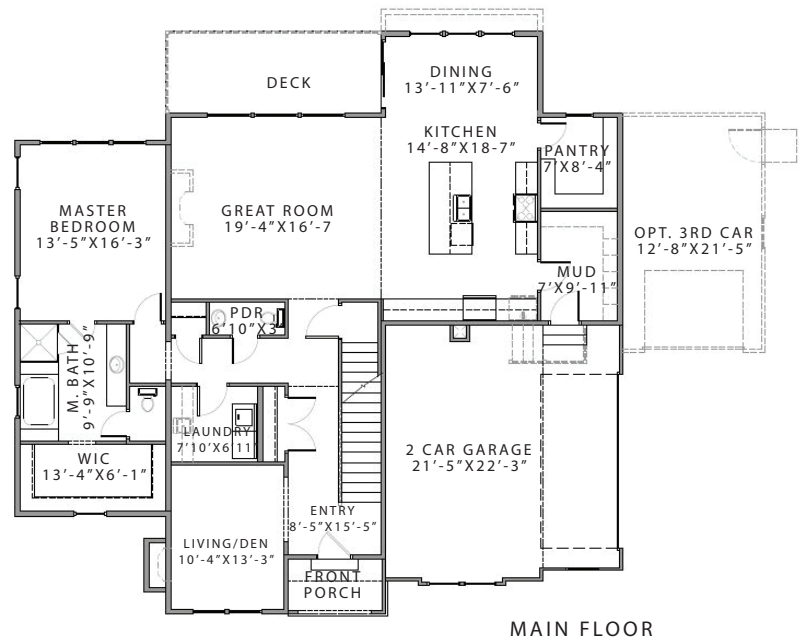
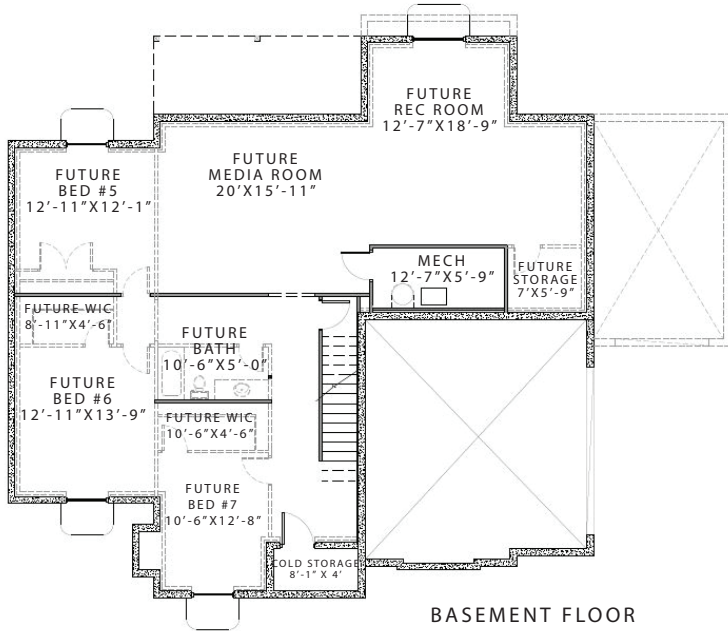
THE BRYN - EUROPEAN

- Master On Main with WIC
- Open to Above in Grand Entry
- Two Story Ceilings in Great Room
- 4 Beds, 2.5 Baths with Room to Grow in the Basement

Overall dimensions: W: 55'-9" X D: 53'-6"
 Finished square feet: 2,931
 Unfinished square feet: 1,950
 Total square feet: 4,881



THE BRYN - EUROPEAN



All information contained herein is subject to change without notice at any time.
 Some features may vary depending on plan. All Rights Reserved ©2020 Cadence Homes