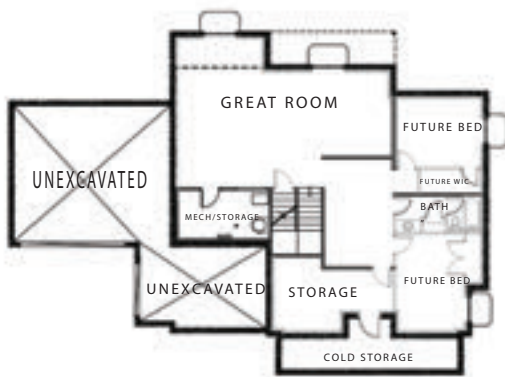


Est. Price Range \$1,000,000's

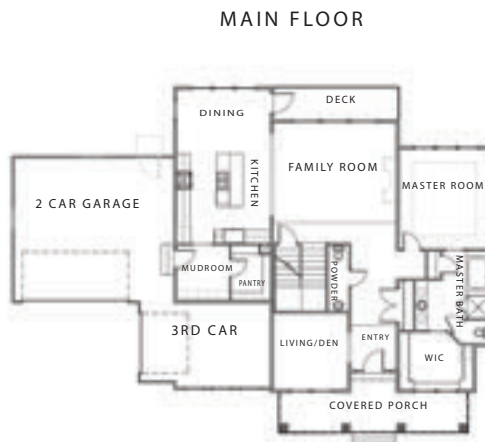
Est. Completion August 2021



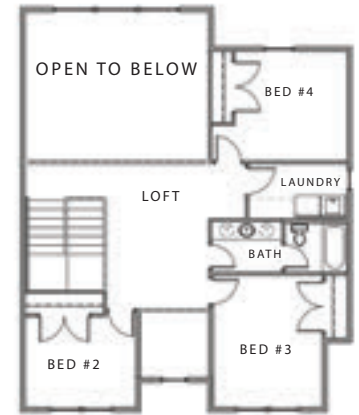
Vivian Estates is one of the most sought-after communities in East Lehi. Enjoy easy access to recreation in the Traverse Mountain trails only minutes away as well as close proximity to Skyridge High School, shopping and close I-15 access. Sitting on a .25 acre lot with a private master on the main level, enjoy your gorgeous backyard views from the comfort of your bedroom!



BASEMENT FLOOR



MAIN FLOOR



UPPER FLOOR

**THE TESSA**

- Lot Size = .25 Acre
- Private Master Suite On Main Floor
- Open and Inviting Plan - Great For Entertaining
- Large Windows in Living Room - Ample Light Throughout

Overall dimensions: W: 72'-4" X D: 53'-10"  
 Finished square feet: 2,648  
 Unfinished square feet: 1,971  
 Total square feet: 4,619

All information contained herein is subject to change without notice at any time.  
 Some features may vary depending on plan. All Rights Reserved ©2020 Cadence Homes