

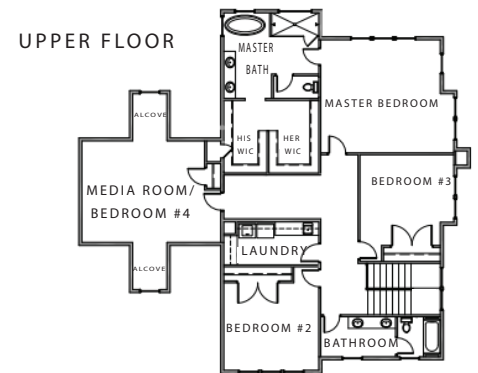
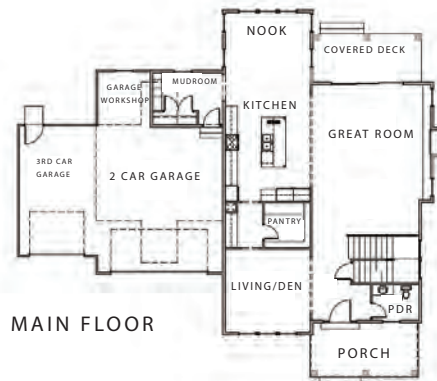
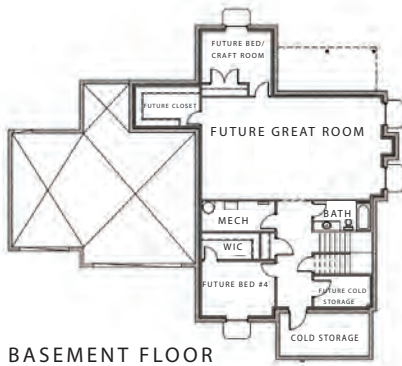
Est. Price Range \$1,250,000's

Est. Completion October 2021



Location, location, location! Come see one of the most sought-after neighborhoods on the East side in Pleasant Grove. This gorgeous Shiloh floorplan, offers unique details to the home that sets it apart from others... You will find a warm, inviting home, with all the right finishes. An entertainer delight, with open kitchen, nook and great room. The oversized master suite features double closets and sinks, an oversized walk-in shower, and freestanding tub.

This home does not disappoint!



THE SHILOH

- 4 Beds and 2 Baths Upstairs + 5th Bed and 1 full Bath in Basement + 1/2 Bath on Main Level
- 3 Car Garage with Workshop in Rear
- Lot Size = .38 of an acre
- Basement finished with Fifth Basement Bed and Full Bathroom, Oversized Great Room and Ample Storage

Overall dimensions: W: 66'-0" X D: 55'-0"
 Finished square feet: 5,237
 Unfinished square feet: 361
 Total square feet: 5,598

All information contained herein is subject to change without notice at any time. Some features may vary depending on plan. All Rights Reserved ©2020 Cadence Homes