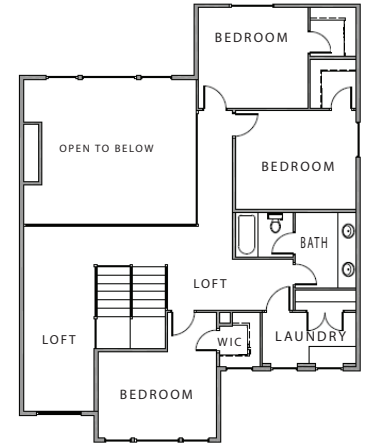
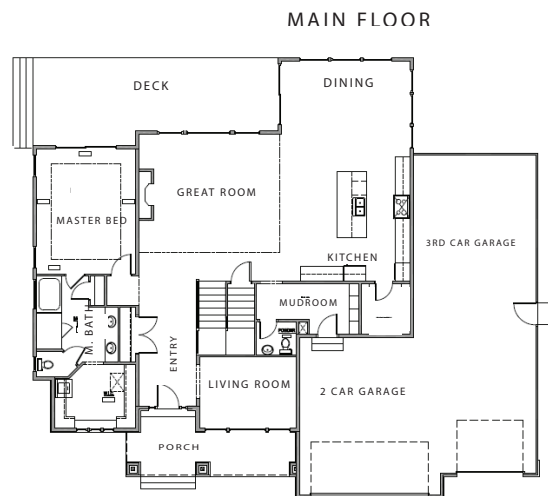
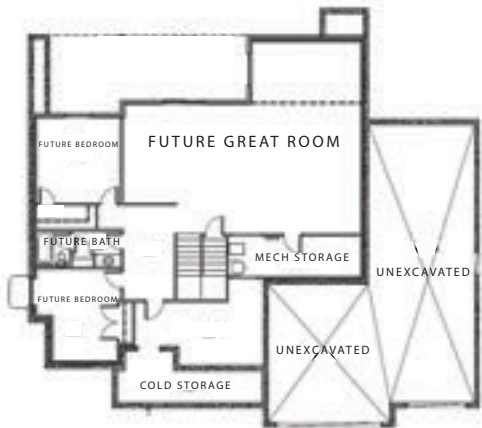


Est. Price Range \$1,300,000's

Est. Completion October 2021



This home offers plenty of Contemporary sophistication! 5390 sq. feet of beautiful finishes. 1/2 acre lot with 4 car garage capacity. 6 Bedrooms, 3.5 baths and a walk out basement. The yard backs a huge regional park, pond and miles of trails! Master on main with hookups for laundry in the master closet. Gourmet kitchen, large dining nook and a two story great room. Massive deck with access to the master and great room. Enjoy all the beautiful sunsets out of the comfort of your own home!



THE KAYA-BELLE

- 6 Bed, 3.5 Bath with a Walk Out Basement
- 4 Car Garage Capacity
- Lot Size = 1/2 Acre
- Spacious Two Story Great Room

Overall dimensions: W: 69' x D: 64'
 Finished square feet: 4,839
 Unfinished square feet: 588
 Total square feet: 5,427

All information contained herein is subject to change without notice at any time.
 Some features may vary depending on plan. All Rights Reserved ©2020 Cadence Homes