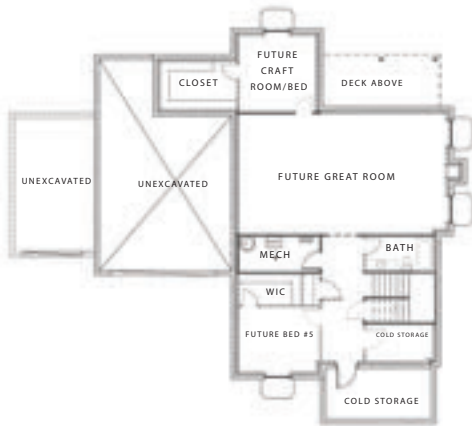


Est. Price Range \$1,100,000's

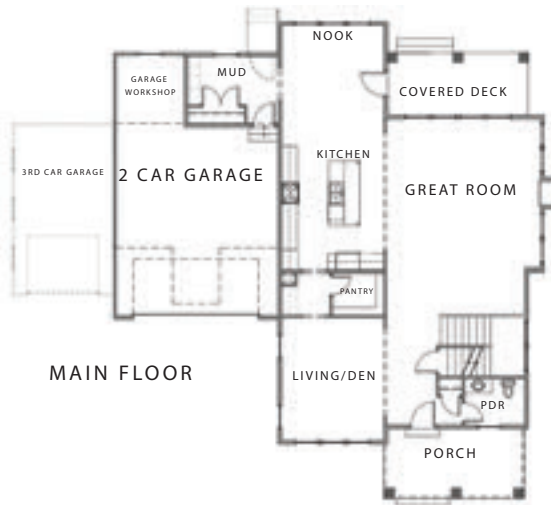
Est. Completion November 2021



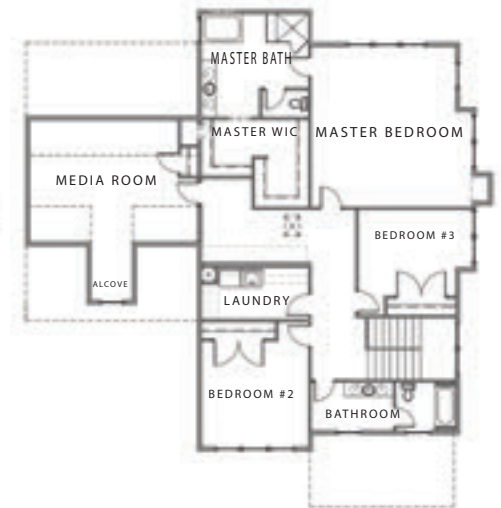
One of Cadence's newest open concept floor plans! With almost 3600 sq ft of above grade footage and 1795 more in the basement, this home has so much to offer. Sitting on a .24 acre lot with 4 bedrooms and 2 1/2 baths upstairs. Master is enormous! Spacious kitchen and great room, with dining nook full of natural light! Room to grow in the unfinished basement with 9' ft ceilings!



BASEMENT FLOOR



MAIN FLOOR



UPPER FLOOR

THE SHILOH

- 4 Bed, 2.5 Bath
- 9' Ceilings in the Basement
- Lot Size = .24 Acres
- Spacious 3 Car Garage

Overall dimensions: W: 70'-0" X D: 60'-10"
 Finished square feet: 3,591
 Unfinished square feet: 1,795
 Total square feet: 5,386

All information contained herein is subject to change without notice at any time.
 Some features may vary depending on plan. All Rights Reserved ©2020 Cadence Homes