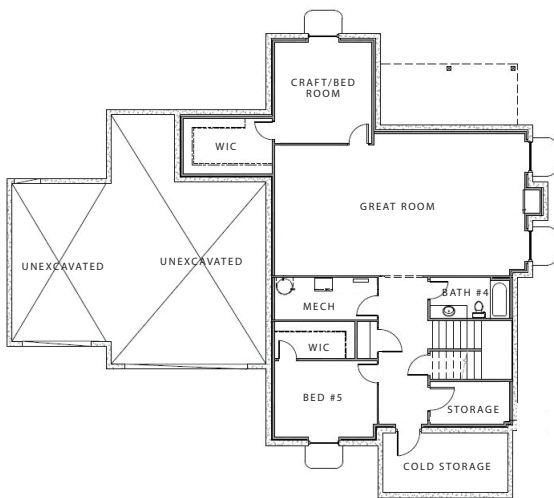


THE SHILOH PLAN

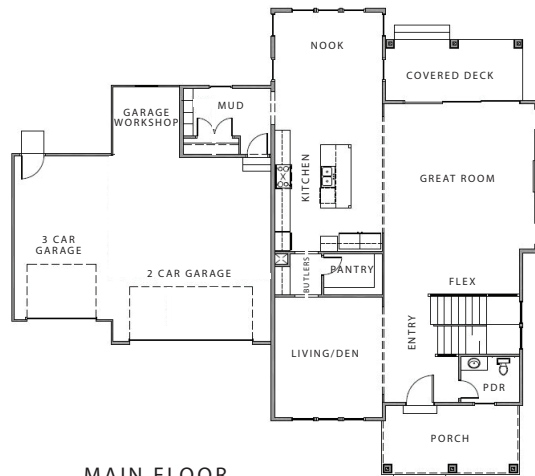
OFFERED AT \$1,620,813
HOME AVAILABLE IN THE FALL OF 2023



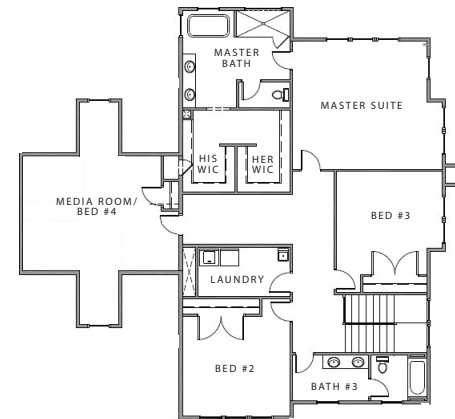
CONTACT KRISTIE PARASPOLO AT KRISTIE@CADENCEHOMES.COM OR TEXT AT 801-633-8372 FOR MORE INFORMATION



BASEMENT FLOOR



MAIN FLOOR



UPPER FLOOR

THE SHILOH

- Fully Finished Basement
- Lot size = .325 Acres
- 3 Car Garage with Workshop Area
- Gourmet Kitchen Featuring, Cooktop, Double Ovens, All Fridge/All Freezer + Butlers Pantry
- Luxurious Owners Retreat with Abundance of Light, Freestanding Tub, Full Euro Shower + His and Hers Walk-In Closets

Overall dimensions: W: 71'-0" x D: 60'-10"
Finished square feet: 5,236
Unfinished square feet: 361
Total square feet: 5,597

All information contained herein is subject to change without notice at any time.
Some features may vary depending on plan. All Rights Reserved ©2020 Cadence Homes