

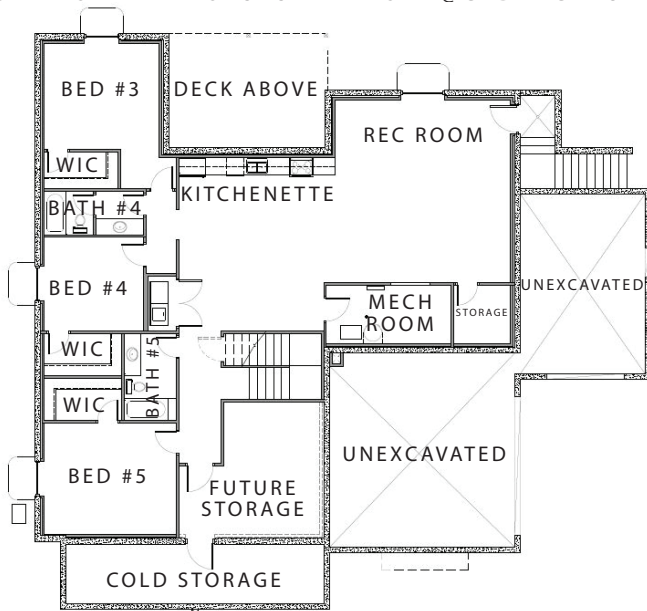
THE CHANDLER PLAN

OFFERED AT \$1,620,000
HOME AVAILABLE FOR IMMEDIATE MOVE-IN

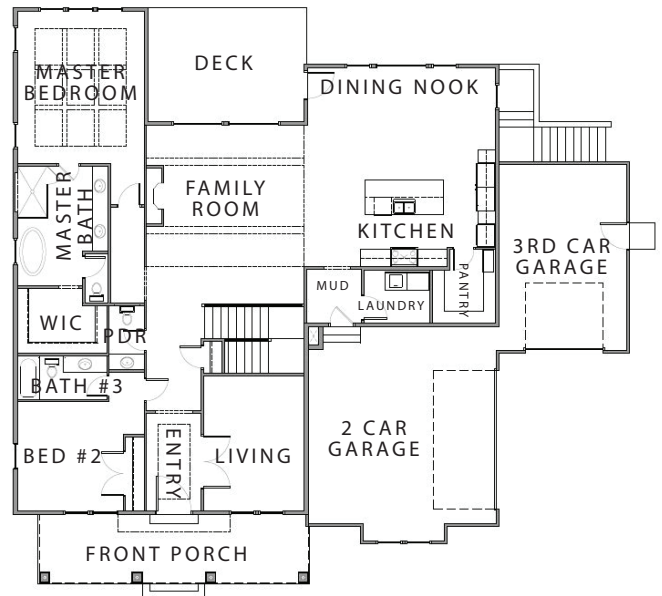


MLS #1898857

CONTACT KRISTIE PARASPOLO AT KRISTIE@CADENCEHOMES.COM OR TEXT AT 801-633-8372 FOR MORE INFORMATION



BASEMENT FLOOR



MAIN FLOOR

THE CHANDLER

- Lot Size = .50 Acres
- 3 Car Garage
- Rear Walk-Out with a Finished Basement
- Upgraded Appliances, Quartz Countertops and Modern Light Fixtures

Overall dimensions:	W: 71'-0" x D: 66'-4"
Finished square feet:	4,354
Unfinished square feet:	721
Total square feet:	5,075

All information contained herein is subject to change without notice at any time.
Some features may vary depending on plan. All Rights Reserved ©2020 Cadence Homes