

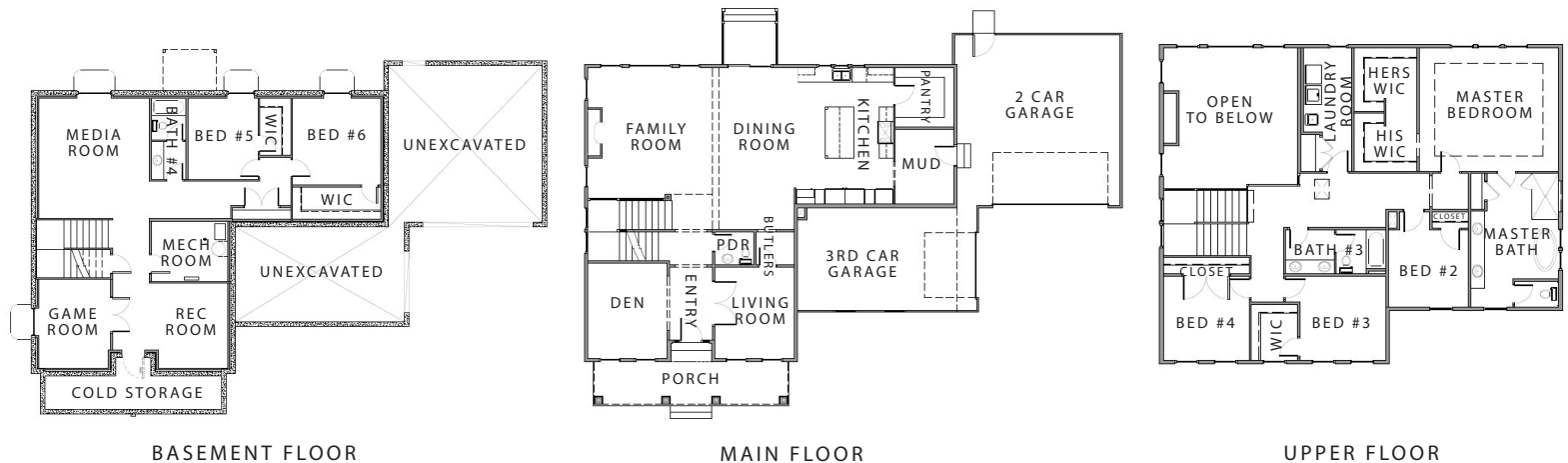
THE PARKER PLAN

OFFERED AT \$1,602,047
HOME AVAILABLE FOR IMMEDIATE MOVE-IN



MLS #190051

CONTACT KRISTIE PARASPOLO AT KRISTIE@CADENCEHOMES.COM OR TEXT AT 801-633-8372 FOR MORE INFORMATION



THE PARKER

- Lot Size = .38 of an Acre
- Includes a Finished Basement
- Spectacular Kitchen with an Oversized Pantry and Mudroom
- Two Story Great Room, Fireplace and Oversized Windows
- Luxurious Owners Retreat and Bath featuring Freestanding Tub, and His and Her Walk-In Closets

Overall dimensions: W: 75'-0" x D: 51'-5"
Finished square feet: 4,647
Unfinished square feet: 391
Total square feet: 5,038