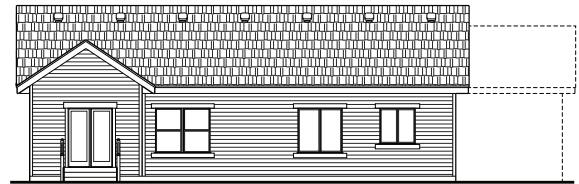
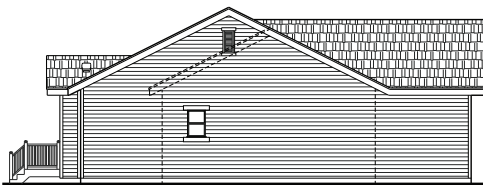




FRONT ELEVATION



BACK ELEVATION



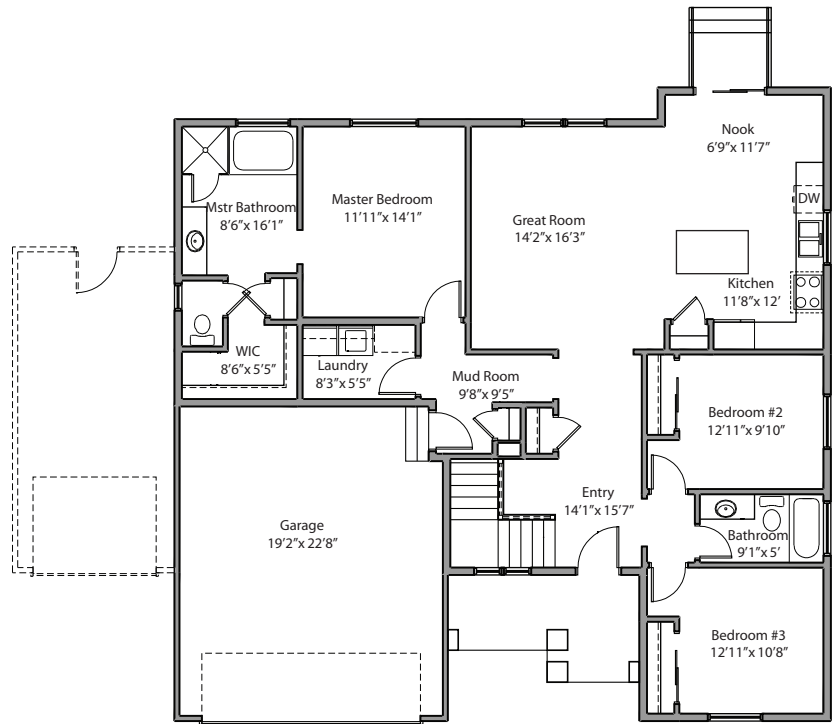
LEFT ELEVATION



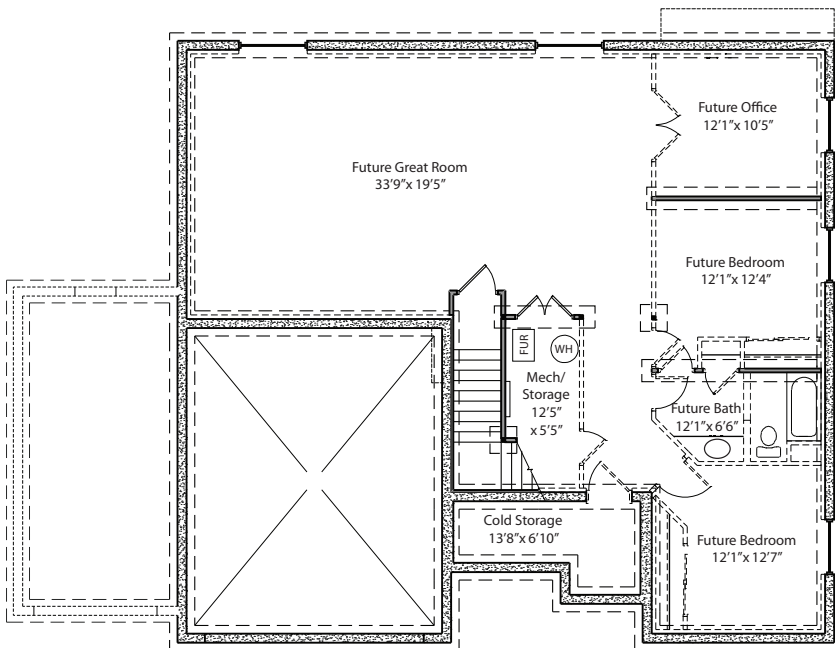
RIGHT ELEVATION

Grand wide entry
Private master bedroom
Loads of closet space
Sunny breakfast nook

overall dimensions:	48' x 44'
finished sq ft:	1,569
unfinished sq ft:	1,491
total sq ft:	3,060



MAIN FLOOR



BASEMENT

- Grand wide entry
- Private master bedroom
- Loads of closet space
- Sunny breakfast nook

overall dimensions:	48' x 44'
finished sq ft:	1,569
unfinished sq ft:	1,491
total sq ft:	3,060