



(Optional Entry and Garage Door Shown)

FRONT ELEVATION



RIGHT ELEVATION



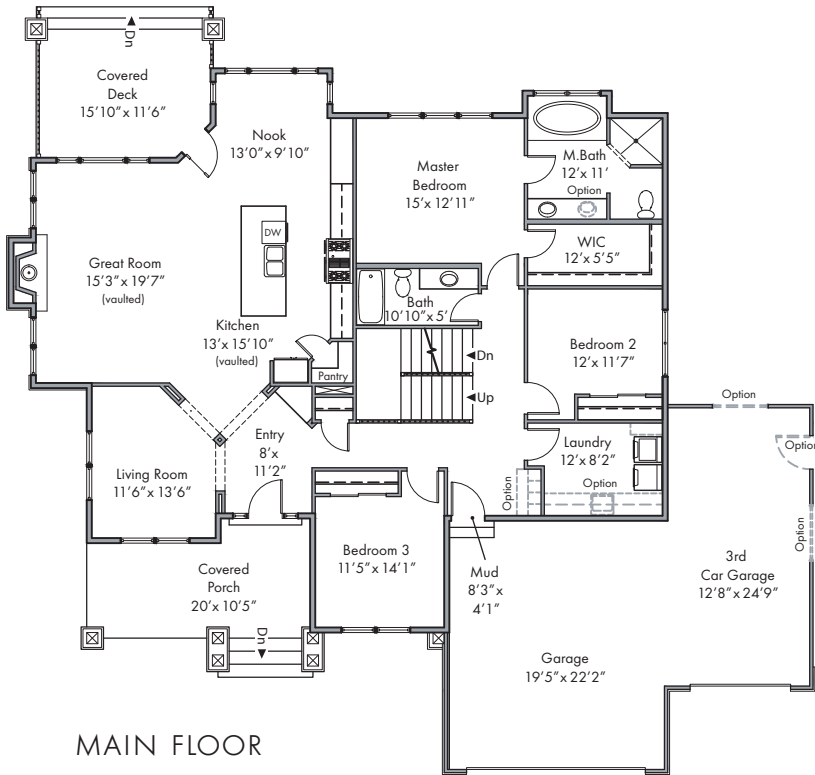
BACK ELEVATION



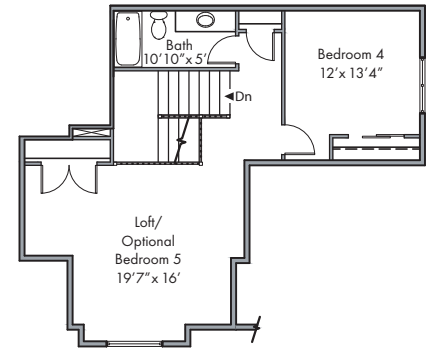
LEFT ELEVATION

ELEGANT CRAFTSMAN DESIGN
 VAULTED GREAT ROOM WITH FIREPLACE
 GRAND WINDOWS THROUGHOUT
 LARGE COVERED PORCH & DECK
 5 BEDROOMS/ 3 BATHS/ LOFT OPTION
 FANTASTIC LAUNDRY ROOM

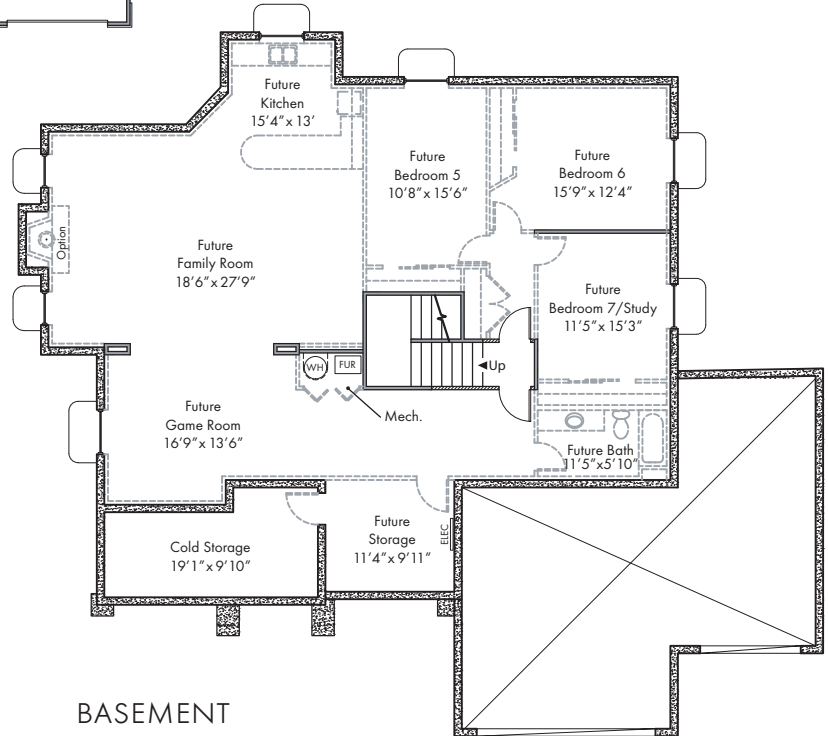
OVERALL DIMENSIONS: 63'0" x 59'0"
 FINISHED SQ FT: 2,959
 UNFINISHED SQ FT: 2,285
 TOTAL SQ FT: 5,244



MAIN FLOOR



LOFT



BASEMENT

ELEGANT CRAFTSMAN DESIGN
 VAULTED GREAT ROOM WITH FIREPLACE
 GRAND WINDOWS THROUOUT
 LARGE COVERED PORCH & DECK
 5 BEDROOMS/ 3 BATHS/ LOFT OPTION
 FANTASTIC LAUNDRY ROOM

OVERALL DIMENSIONS: 63'0" x 59'0"
 FINISHED SQ FT: 2,959
 UNFINISHED SQ FT: 2,285
 TOTAL SQ FT: 5,244